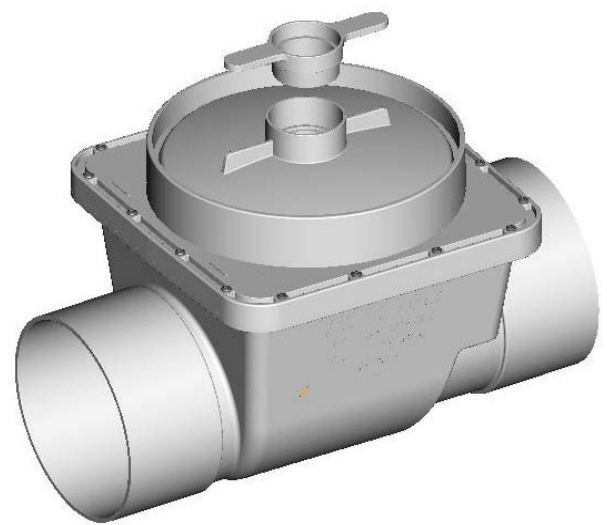




PRODUCT SPECIFICATIONS

DRAIN WASTE VENT (DWV) REFLUX VALVES

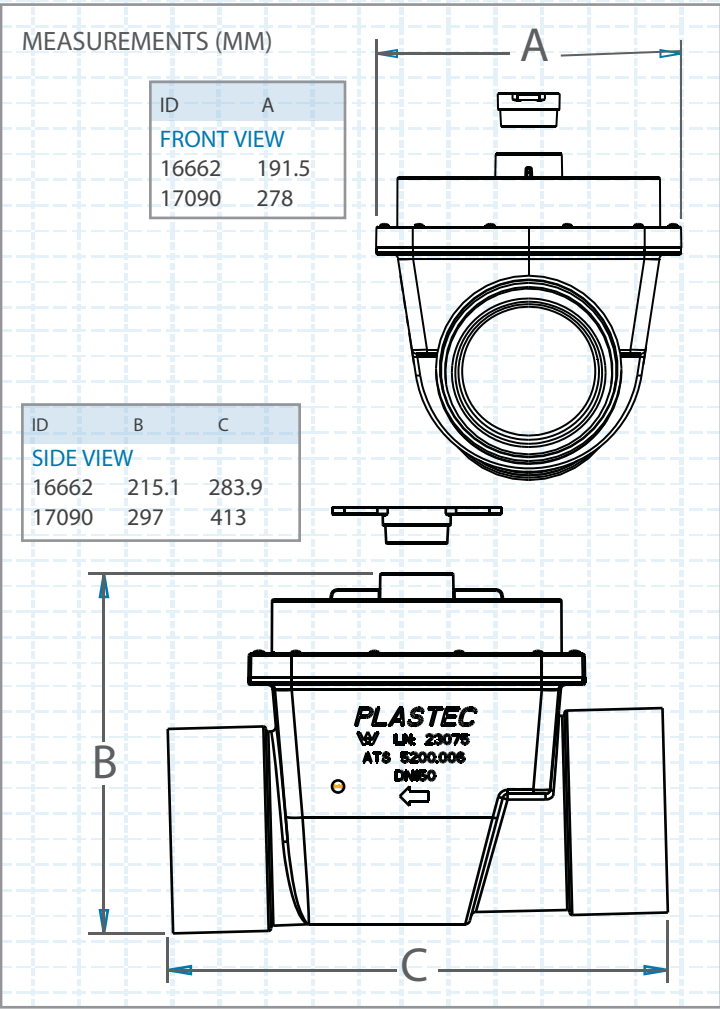
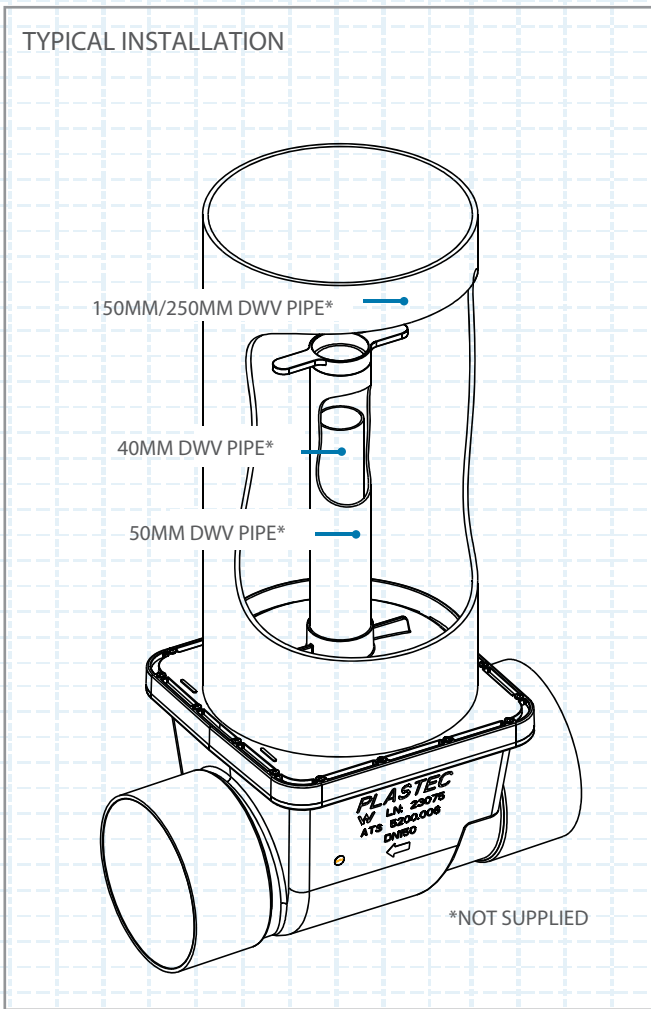
- No need for additional chamber
- Easy access for replacement of non-return assembly
- Adjustable riser height
- Helps prevent rodents entering through pipes



ID		
16662	100	8
17090	150	1

RELATED PRODUCTS (sold separately)

- 150mm Bolted Trap Screw (BTS) 17097, suitable for use with 16662
- 225mm Bolted Trap Screw (BTS) 18111, suitable for use with 17090



PH: 07 5413 4444 WWW.PLASTEC.COM.AU

SPECIFICATIONS ARE CORRECT AS AT 07/05/2020 BUT IARE SUBJECT TO CHANGE AT ANYTIME WITHOUT NOTICE.