

# CIRCULATION PUMP

Part Number:7575250

**BROMIC**  
PLUMBING & GAS



*The Manual for Operating  
and Maintenance*



### WARRANTY

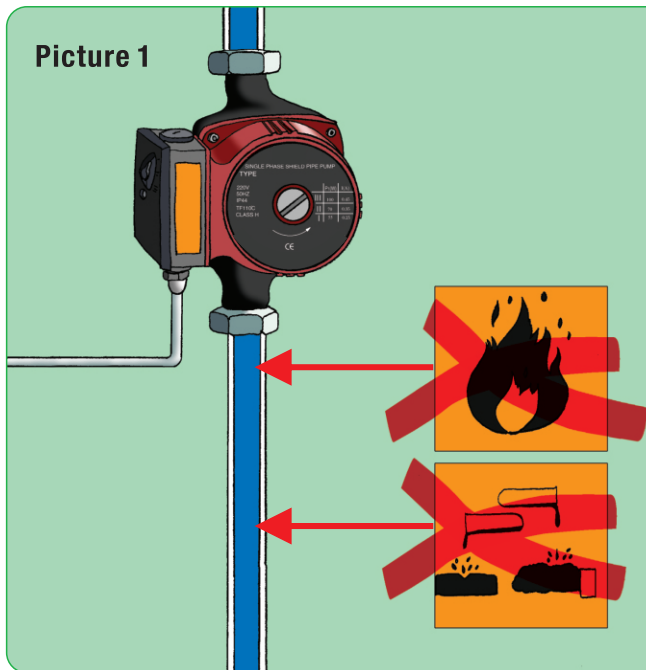
We certify that our water pump detailed on the enclosed warranty repair coupon is guaranteed against defects in material and workmanship for 24 MONTHS from the date of purchase, providing it has been sold by an authorized and appointed dealer. Within this period, adjustment, repair or replacement of parts or whole will be performed without charge except in the case of damage caused by accidents, misuse, tampered or lack of care. To qualify for service under the warranty, you must present your pump together with a valid warranty repair coupon (attached at the end of this warranty certificate) to the dealer from whom you purchased the pump. Postage, insurance and freight are to be paid by the owner of the pump.

Purchase Records
Date of Purchase:
Model No.:
Sold by (Shop name):
Invoice No.:
<p><b>IMPORTANT</b></p> <ol style="list-style-type: none"> <li>1. This warranty does not cover such defects caused by the owner's neglect of instruction manual before operation.</li> <li>2. This warranty excludes operation on high/low voltage than specified, tampering with electrical system, voltage surges as a result of lightning or faulty electrical supply.</li> <li>3. This warranty is valid only if properly filled in and dated by the authorized and appointed dealer from whom you purchased the pump.</li> <li>4. We will not honor altered or tampered warranty repair coupons or photocopies of the guarantee repair coupons.</li> <li>5. This warranty does not affect specific legal rights of a consumer.</li> <li>6. We reserve the right to relinquish all responsibility under this warranty for repair if the pump is tampered with or damaged by other than authorized technician</li> <li>7. We are not liable to any damage with or damage to pump due to natural disaster. Such as fire, flood or earthquake.</li> </ol>

## 1. Conditions of operation

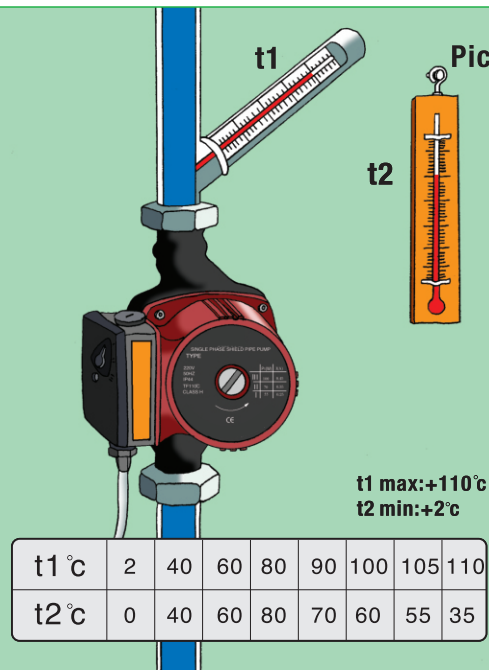
- Bearing of pump is lubricated with water, running dry will permanently damage the pump and void the warranty
- Ambient temperature must be lower than water temperature as shown in picture 2

Picture 1



4

Picture 2

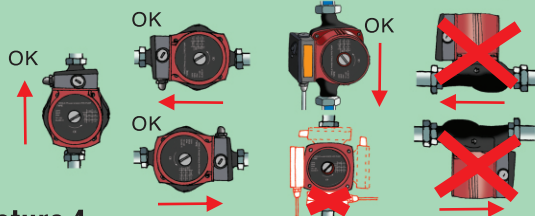
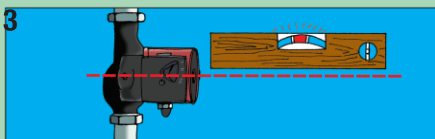


5

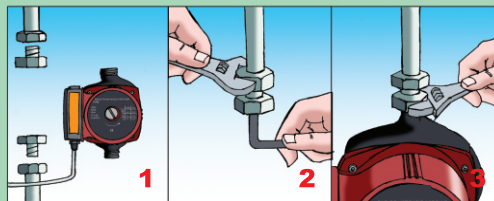
## 2. Points for installation

- Pump must be horizontally installed. Shown as Picture 3.
- Pump must be installed according to following procedures shown as Picture 4.

Picture 3

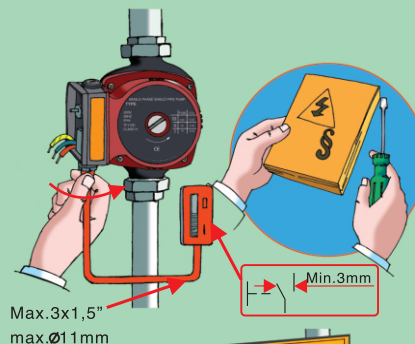


Picture 4

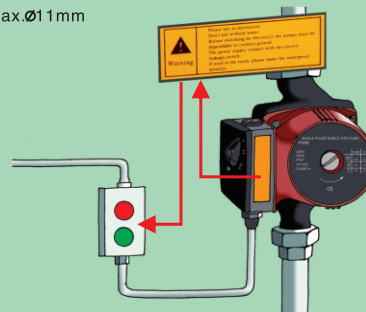


- The pump (and wiring) must be installed by licensed technician according to local regulations as shown in picture 5
- Please read the warnings carefully before installation. Shown as Picture 6.

Picture 5

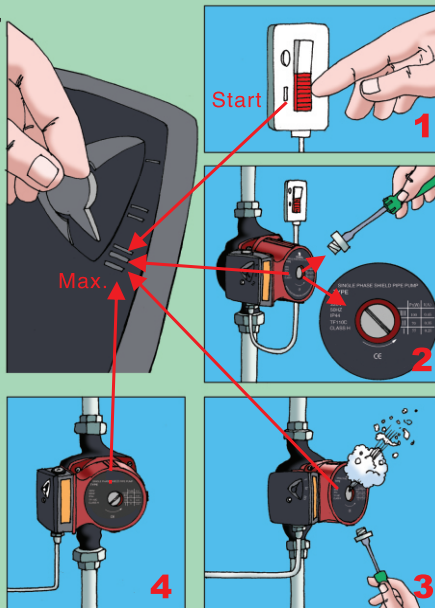


Picture 6



- After installed, pump must be deflated before working for the first time. Shown as Picture 7.

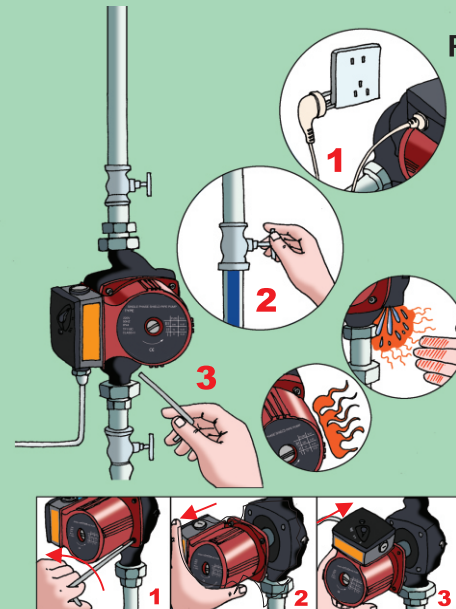
**Picture 7**



### 3. Maintenance and repair

- Attention: If damaged, the power plug and cord must be replaced by licensed technician. The maintenance procedures are shown in picture 8

**Picture 8**



● Common troubles diagnostic list.

Common troubles	Causes of troubles	The measures of eliminating troubles
Pump failed to start	Power supply is not well connected.	Check if cable and plug is damaged; check power supply
	Electric capacitor is damaged.	Replace faulty capacitor by licensed technician
	Bearing stuck	Run the pump at highest speed for 5 seconds, or consult service technician
	There is impurity in pump.	Disconnect pump to clean.
There is noise in the system.	The pump flow is made too high.	Adapt to a lower speed.
	There is gas in the pump.	Release the gas up. (refer to pic.7)
There is noise in the pump.	There is gas in the pump.	Release the gas up. (refer to pic.7)
	The inlet hydraulic pressure is too low.	Increase hydraulic pressure of inlet or check gas volume in the enlarged slot.

#### 4. Warranty

Please visit our webpage for warranty details- (<http://www.bromic.com/warranty-information/>)

Read all relevant documentation before operating the pump. Failure to follow instructions may result in warranty being voided